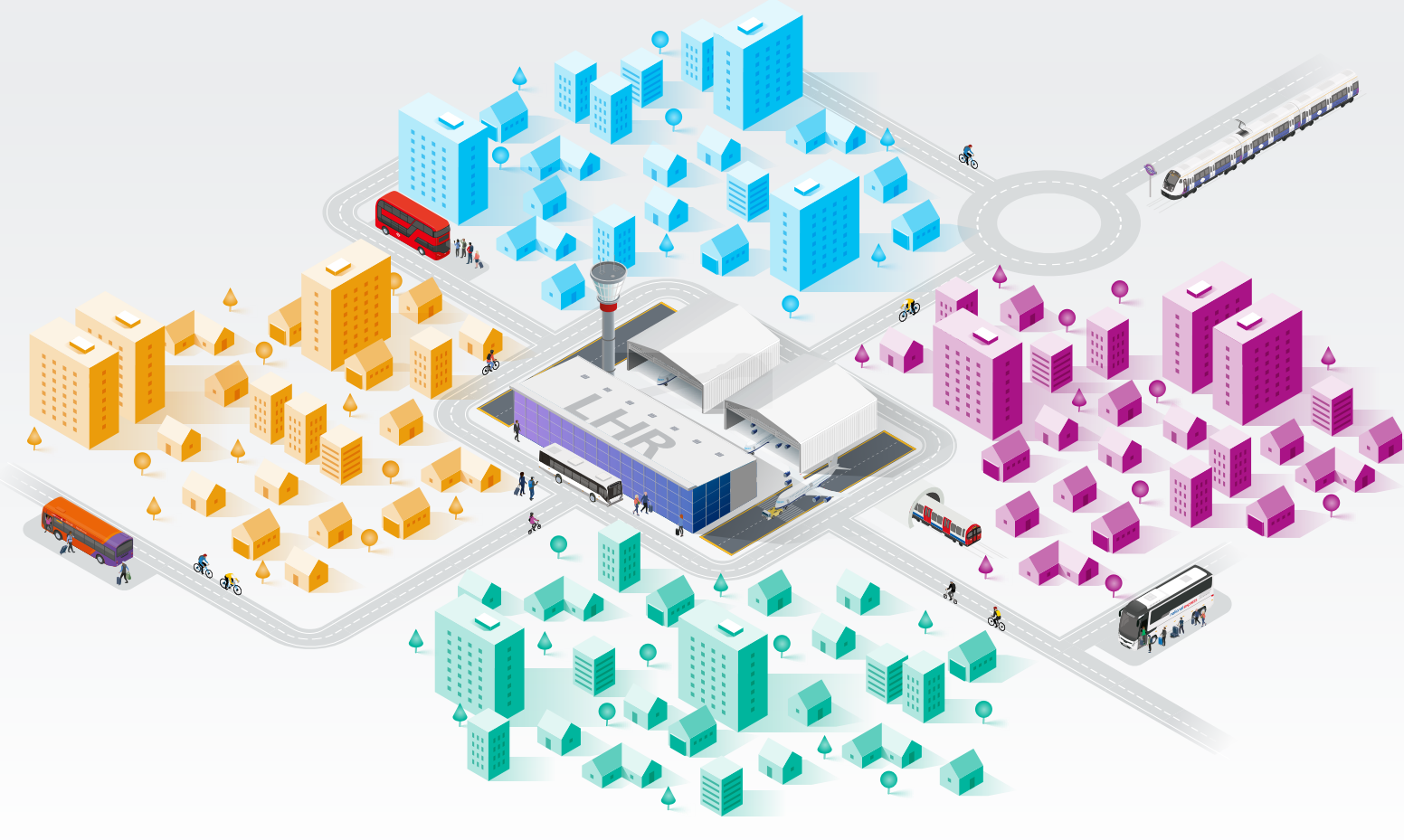


ULEZ Decision Guide

Transport for London's Ultra Low Emission Zone (ULEZ) charges are changing the way you drive (by car, motorbike or van) to your job at Heathrow.

The good news is that ULEZ charges are avoidable if you're prepared to make some changes to your daily commute. **Our decision guide helps you work out your options for avoiding emissions charges.**



1 Is your car, motorbike or van ULEZ-compliant?

To find out, tap in your registration at [TfL.co.uk](https://www.tfl.gov.uk/roadsidehelp/vehicles/vehicles-ulez)

No

Yes

Good news: you can continue driving to Heathrow (and elsewhere within the ULEZ zone) free of charge.

Is there a greener or cheaper option?

Maybe. There are loads of ways to commute that help tackle climate change while saving you and your colleagues some money.

Visit [Commuting to Heathrow](#) to find a better way to travel.

2 Could you switch to public transport?

It's closer than you think

Roughly 50% of your Team Heathrow colleagues live within 15 minutes of a direct public transport link to Heathrow.

Download our [Sustainable Travel Zone Guide](#) to find out what services run near you.

No

Yes

Well done. That's a great choice that could be even better in future. We update our [Sustainable Travel Zone Guide](#) every week, so keep checking back to see how public transport is changing where you live.

3 Could you walk or cycle to work?

Cost-saving and good for you

Walking and cycling help reduce stress, and are good for your physical and mental health. Even if you swap the car for walking or cycling just one day a week, that would be a step towards tackling the climate crisis.

See the [cycle routes in and around Heathrow](#).

No

Yes

Would that ride be even easier if you had a new bike or your old one was in better condition? See our latest [offers and support for buying and maintaining your bike](#).

4 Would you be willing to try car-sharing?

See how easy it is to sign up for [the Heathrow car-share scheme](#).

No

Yes

Good choice. Car-sharing is a great way to save money, cut pollution and make a new friend or two.

5 Do you qualify for help to buy a better, ULEZ-friendly car?

Check here to see if your current vehicle qualifies for [TfL's scrappage scheme](#).

No

Yes

Great news! You could get a helping hand of up to £2,000 to buy, or contribute towards, a vehicle that meets the ULEZ standards.

6 Do you qualify for other forms of help?

Heathrow is launching a car leasing scheme and a car loan scheme for its employees. Other Team Heathrow colleagues should ask their own employers if they're planning anything.

Yes

The Heathrow scheme is still under development. We'll let you know as soon as we have more details.

No

Don't lose heart because we're looking at other support, including park-and-ride options. Full details to follow.

Keep in the loop: other ways to find out more about Heathrow commuting and ULEZ.

1

Join our [virtual roadshow](#) via Teams.

2

Join us at a [WAY2GO Pop-up Roadshow](#) (various Terminals)

3

Sign up for [the WAY2GO Newsletter](#)

4

Email us at commuter@heathrow.com

5

Visit the [Commuting to Heathrow website](#)