

# Service quality rebate



Heathrow Terminal 1	Dec-13				Year to date *	
	Actual	Target	Target achieved	Rebate £	Rebate £	Number of failures
Departure lounge seat availability	4.1	3.8	Yes	0	0	0
Cleanliness	4.1	3.9	Yes	0	0	0
Wayfinding	4.1	4.0	Yes	0	0	0
Flight information	4.3	4.2	Yes	0	0	0
Central security queues - Times queue <5 minutes	91.06%	95.00%	No	359,635	1,078,905	3
Central security queues - Times queue = 10 minutes	98.94%	99.00%	No			
Passenger sensitive equipment (general)	99.78%	99.00%	Yes	0	0	0
Passenger sensitive equipment (priority)	99.75%	99.00%	Yes	0	0	0
Arrivals reclaim (baggage carousels)	99.43%	99.00%	Yes	0	0	0
Stands	99.91%	99.00%	Yes	0	0	0
Jetties	99.71%	99.00%	Yes	0	0	0
FEGP	99.92%	99.00%	Yes	0	0	0
Stand entry guidance	100.00%	99.00%	Yes	0	0	0
Transfer search	95.90%	95.00%	Yes	0	0	0
Staff search	97.81%	95.00%	Yes	0	0	0
Control posts search	96.59%	95.00%	Yes	0	0	0
Pier service	98.64%	94.12%	Yes	0	0	0
<b>Total</b>				<b>359,635</b>	<b>1,078,905</b>	<b>3</b>

NOTE: \* year is April 2013 to March 2014

CREDIT NOTES: will be raised and allocated to the relevant parties that used the terminal in the relevant month pro-rata with the airport charges incurred for passenger services in that month.

FOR FURTHER INFORMATION: please contact Christopher Downs, email: Christopher\_Downs@baa.com

## Service quality rebate



Heathrow Terminal 3	Dec-13				Year to date *	
	Actual	Target	Target achieved	Rebate £	Rebate £	Number of failures
Departure lounge seat availability	3.9	3.8	Yes	0	0	0
Cleanliness	4.1	3.9	Yes	0	0	0
Wayfinding	4.2	4.0	Yes	0	0	0
Flight information	4.4	4.2	Yes	0	0	0
Central security queues - Times queue <5 minutes	80.97%	95.00%	No	0	3,406,656	8
Central security queues - Times queue = 10 minutes	95.44%	99.00%	No	0		
Passenger sensitive equipment (general)	99.80%	99.00%	Yes	0	0	0
Passenger sensitive equipment (priority)	99.84%	99.00%	Yes	0	0	0
Arrivals reclaim (baggage carousels)	99.63%	99.00%	Yes	0	0	0
Stands	99.88%	99.00%	Yes	0	0	0
Jetties	99.76%	99.00%	Yes	0	0	0
FEGP	99.56%	99.00%	Yes	0	0	0
Pre-conditioned air	99.32%	98.00%	Yes	N/A	N/A	0
Stand entry guidance	99.97%	99.00%	Yes	0	0	0
Transfer search	94.38%	95.00%	No	280,127	280,127	1
Staff search	100.00%	95.00%	Yes	0	0	0
Control posts search	96.59%	95.00%	Yes	0	0	0
Pier service +	96.68%	94.00%	Yes	0	0	0
				<b>280,127</b>	<b>3,686,783</b>	<b>9</b>

NOTE: \* year is April 2013 to March 2014 + Pier service score is reported one month in arrears

CREDIT NOTES: will be raised and allocated to the relevant parties that used the terminal in the relevant month pro-rata with the airport charges incurred for passenger services in that month.

PIER SERVICE: Following discussion and agreement with airlines, a revised methodology for the calculation of the pier service percentage in Terminal 3 was implemented in November 2010. The revision applies from February 2009 onwards. Results reported as a fail in prior months are now reported as target achieved.

FOR FURTHER INFORMATION: please contact Christopher Downs, email: Christopher\_Downs@baa.com

# Service quality rebate



Heathrow Terminal 4	Dec-13				Year to date *	
	Actual	Target	Target achieved	Rebate £	Rebate £	Number of failures
Departure lounge seat availability	4.2	3.8	Yes	0	0	0
Cleanliness	4.1	3.9	Yes	0	0	0
Wayfinding	4.2	4.0	Yes	0	0	0
Flight information	4.3	4.2	Yes	0	0	0
Central security queues - Times queue <5 minutes	95.25%	95.00%	Yes	0	0	0
Central security queues - Times queue = 10 minutes	99.40%	99.00%	Yes	0	0	0
Passenger sensitive equipment (general)	99.73%	99.00%	Yes	0	0	0
Passenger sensitive equipment (priority)	99.80%	99.00%	Yes	0	0	0
Arrivals reclaim (baggage carousels)	99.84%	99.00%	Yes	0	0	0
Stands	99.86%	99.00%	Yes	0	0	0
Jetties	99.74%	99.00%	Yes	0	0	0
FEGP	99.95%	99.00%	Yes	0	0	0
Stand entry guidance	100.00%	99.00%	Yes	0	0	0
Transfer search	95.26%	95.00%	Yes	0	0	0
Staff search	97.65%	95.00%	Yes	0	0	0
Control posts search	96.59%	95.00%	Yes	0	0	0
Pier service	99.79%	95.00%	Yes	0	0	0
<b>Total</b>				<b>0</b>	<b>0</b>	<b>0</b>

NOTE: \* year is April 2013 to March 2014

CREDIT NOTES: will be raised and allocated to the relevant parties that used the terminal in the relevant month pro-rata with the airport charges incurred for passenger services in that month.

FOR FURTHER INFORMATION: please contact Christopher Downs, email: Christopher\_Downs@baa.com

# Service quality rebate



Heathrow Terminal 5	Dec-13				Year to date *	
	Actual	Target	Target achieved	Rebate £	Rebate £	Number of failures
Departure lounge seat availability	4.0	3.8	Yes	0	0	0
Cleanliness	4.2	3.9	Yes	0	0	0
Wayfinding	4.2	4.0	Yes	0	0	0
Flight information	4.3	4.2	Yes	0	0	0
Central security queues - Times queue <5 minutes	82.81%	95.00%	No	742,652	4,455,912	6
Central security queues - Times queue = 10 minutes	95.21%	99.00%	No			
Passenger sensitive equipment (general)	99.77%	99.00%	Yes	0	0	0
Passenger sensitive equipment (priority)	99.83%	99.00%	Yes	0	0	0
Arrivals reclaim (baggage carousels)	99.83%	99.00%	Yes	0	0	0
Stands	99.85%	99.00%	Yes	0	0	0
Jetties	99.72%	99.00%	Yes	0	0	0
FEGP	99.88%	99.00%	Yes	0	0	0
Pre-conditioned air	99.77%	98.00%	Yes	N/A	N/A	0
Stand entry guidance	99.99%	99.00%	Yes	0	0	0
Transfer search	95.62%	95.00%	Yes	0	323,227	1
Staff search	95.87%	95.00%	Yes	0	0	0
Control posts search	96.59%	95.00%	Yes	0	0	0
Pier service	90.88%	95.00%	No	0	0	9
Transit system - % time one car available	99.93%	99.00%	Yes	0	0	0
Transit system - % time two cars available	99.44%	97.00%	Yes	0	0	0
<b>Total</b>				<b>742,652</b>	<b>4,779,139</b>	<b>16</b>

NOTE: \* year is April 2013 to March 2014

CREDIT NOTES: will be raised and allocated to the relevant parties that used the terminal in the relevant month pro-rata with the airport charges incurred for passenger services in that month.

FOR FURTHER INFORMATION: please contact Christopher Downs, email: Christopher\_Downs@baa.com

## Service quality rebate



Aerodrome Congestion Term	Dec-13		Year to date *	
	Rebate due	Rebate £	Rebate £	Number of rebates
Aerodrome Congestion Term	No	0	121,988	1
<b>Total</b>			<b>121,988</b>	<b>1</b>

NOTE: \* year is April 2013 to March 2014

FOR FURTHER INFORMATION: please contact Christopher Downs, email: Christopher\_Downs@baa.com



# How are we performing?

December 2013

## KEY TO PERFORMANCE



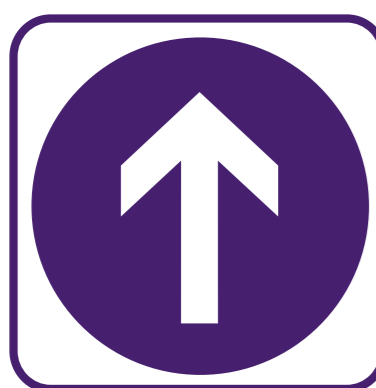
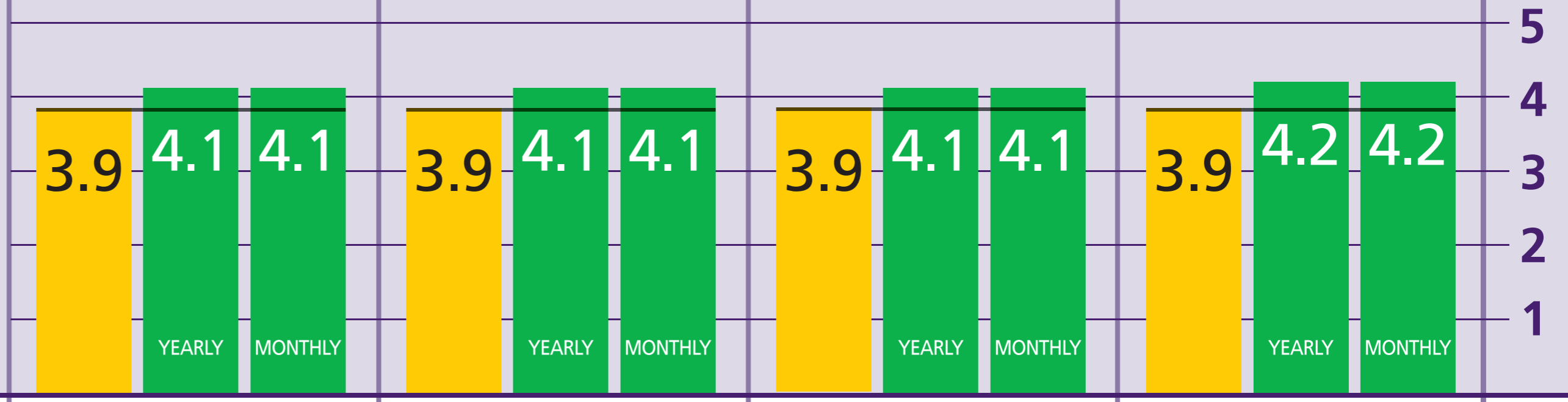
## Terminal 1 Terminal 3 Terminal 4 Terminal 5



### Cleanliness

Overall cleanliness of the terminal

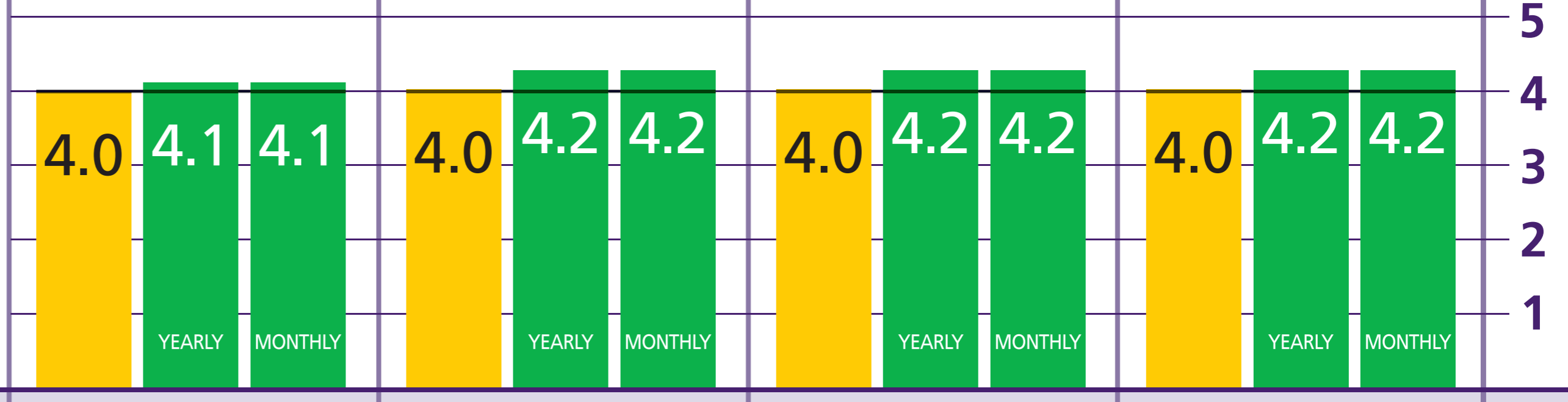
As rated by 1= extremely poor and 5= excellent



### Wayfinding

Ease of finding your way around our airport

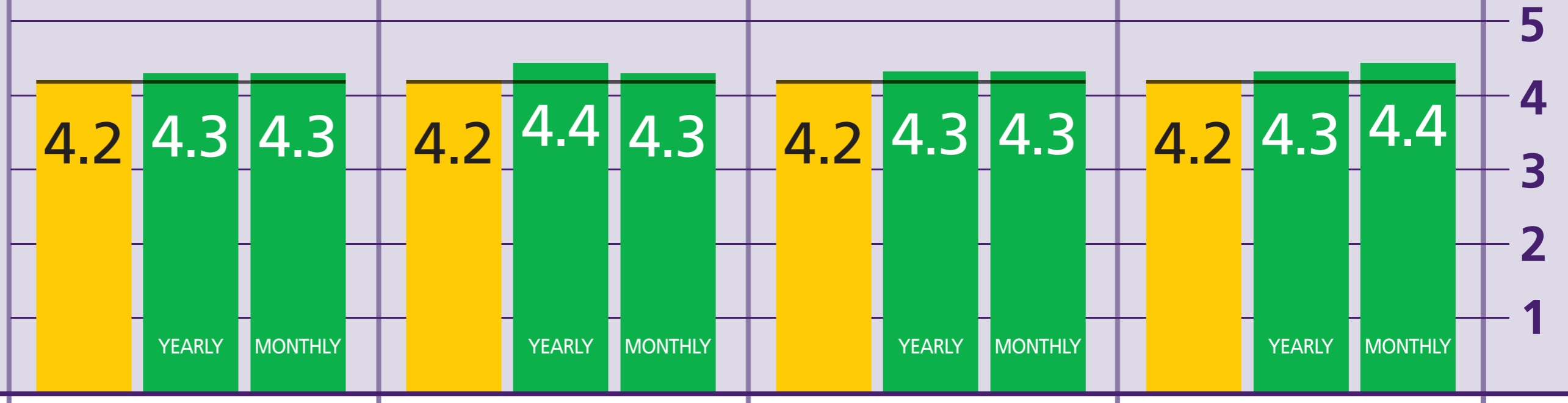
As rated by 1= extremely poor and 5= excellent



### Flight Info

Accuracy and ease of finding flight information

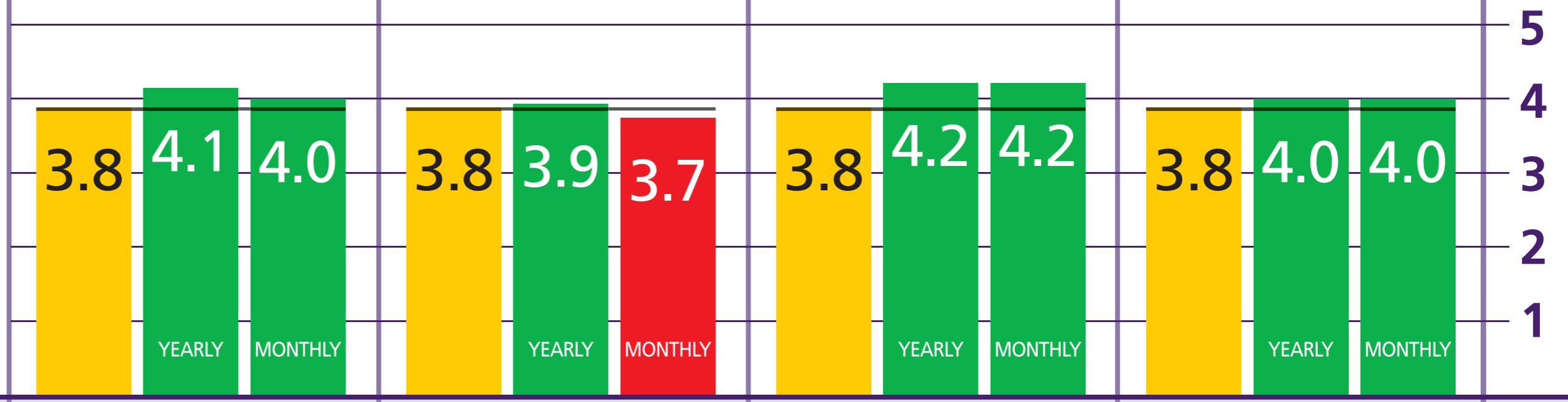
As rated by 1= extremely poor and 5= excellent



### Departure Lounge Seat Availability

Ease of finding a seat

As rated by 1= extremely poor and 5= excellent

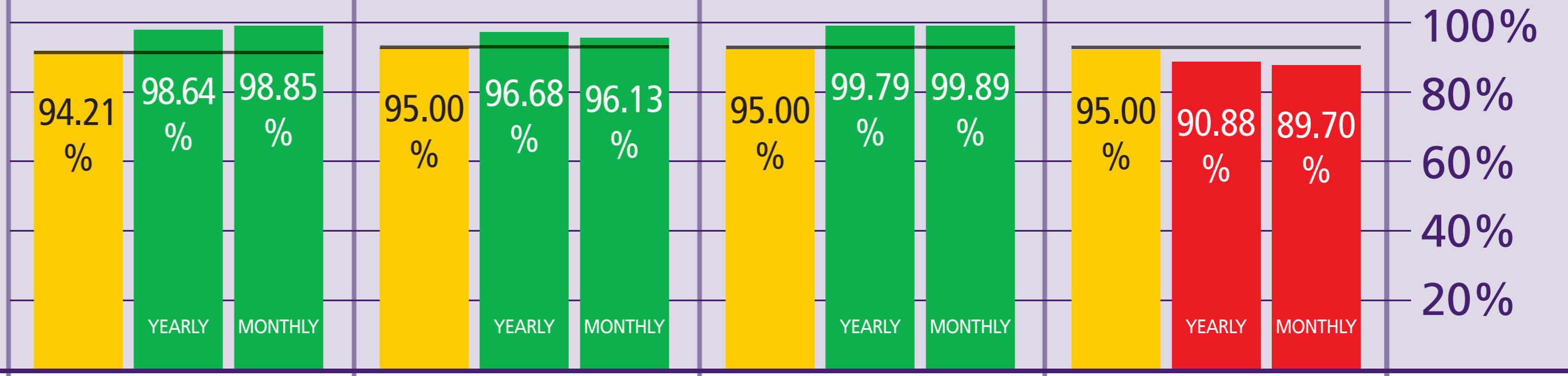


### Pier Service

Percentage of passengers embarking and disembarking directly into the terminal building

Please note: Pier Service targets will change monthly. Annual pass or fail rates will depend on the monthly target. Terminal 3 Pier Service score is reported one month in arrears.

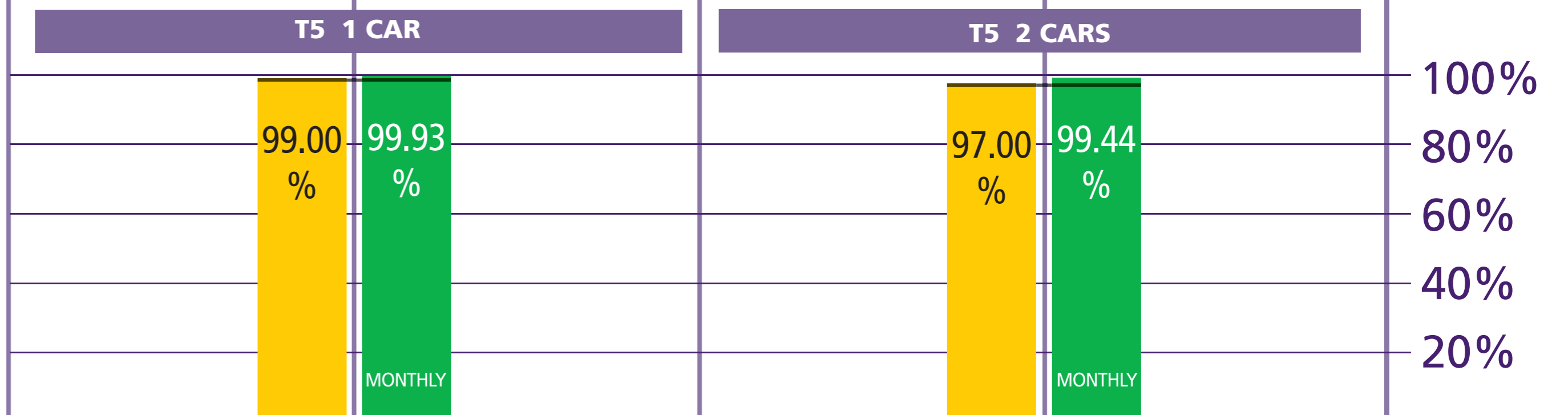
Availability measured over a month



### Terminal 5 Transit

Service availability

Availability measured over a month



We welcome your feedback:  
[heathrowcustomerfeedback@baa.com](mailto:heathrowcustomerfeedback@baa.com)

**Heathrow**  
 Making every journey better

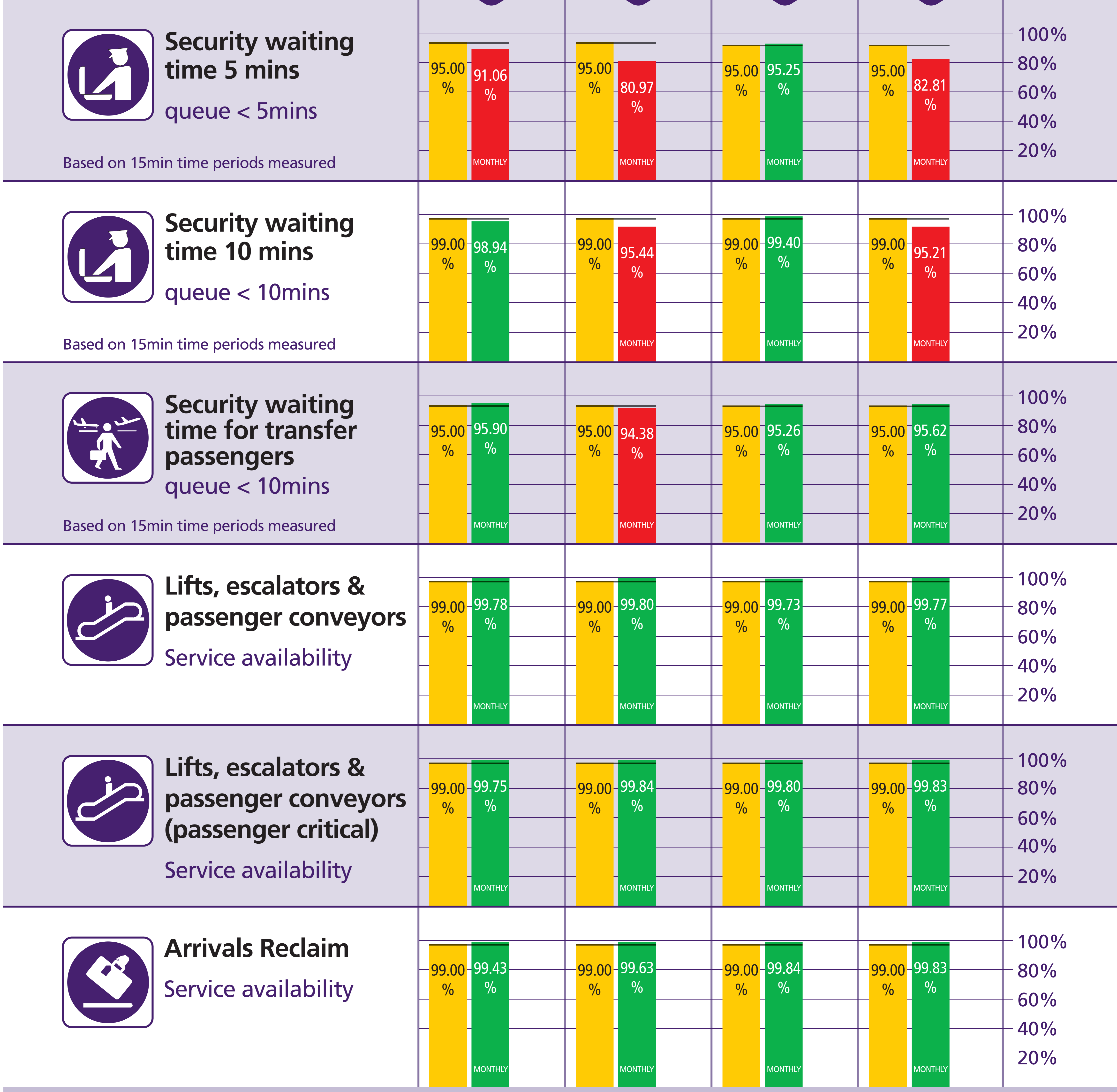
# How are we performing?

December 2013

## KEY TO PERFORMANCE



## Terminal 1 Terminal 3 Terminal 4 Terminal 5



We welcome your feedback:  
[heathrowcustomerfeedback@baa.com](mailto:heathrowcustomerfeedback@baa.com)



# How are we performing?

## December 2013

### KEY TO MONTHLY PERFORMANCE



### AERODROME CONGESTION TERM

The scheme by which third parties are compensated for material events which impacted the airfield

